

JCLplus⁺ Dev Plug-in

Integrated JCL Management for Eclipse Environments

JCLplus⁺ Dev Plug-in extends SEA's JCLplus⁺ Validation and run-time simulation technology to any Eclipse-based Integrated Development Environment (IDE) including BMC AMI DevX Workbench for Eclipse, IBM Developer for z/OS (IDz) and more.

Designed using SEA's proprietary middleware technology, developers can request and receive JCL testing and management services from an Eclipse desktop environment. This empowers a new development experience and simplifies JCL maintenance & support tasks.

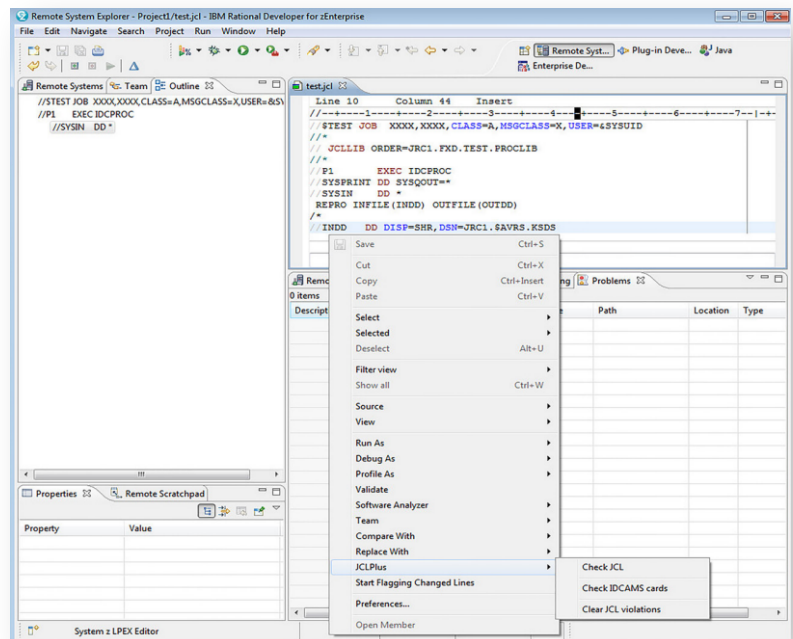
INTEGRATES JCL TESTING SERVICES INTO ECLIPSE-BASED IDEs

Supported Eclipse-based IDEs include:

- BMC AMI DevX Workbench for Eclipse
- IBM Developer for z/OS (IDz)
- Micro Focus Enterprise Developer by Open Text
- Eclipse IDE from the Eclipse Foundation
- Other Eclipse environments

JCL SYNTAX CHECK AND RUN-TIME SIMULATION

The JCLplus⁺ Dev Plug-in offers the option to target a specific z/OS image for testing and editing services, performing a comprehensive JCL run-time simulation on the designated image. This relays the outcomes within the Eclipse environment.



COLOR-CODED ERROR MESSAGES AND FILTERS

Returned error messages, warnings and informational messages from scanned results are color-coded for easy identification and navigation.

VERIFIES JCL PRODUCTION STANDARDS

Enforces JCL standards, coding practices, naming conventions, and resource utilization to reduce outages, comply with organization's governance, and enable automation.

COMPRESSION & ENCRYPTION CAPABILITIES

JCLplus⁺ Dev Plug-in also provides compression and encryption functionalities to minimize both network impact and security exposure.